

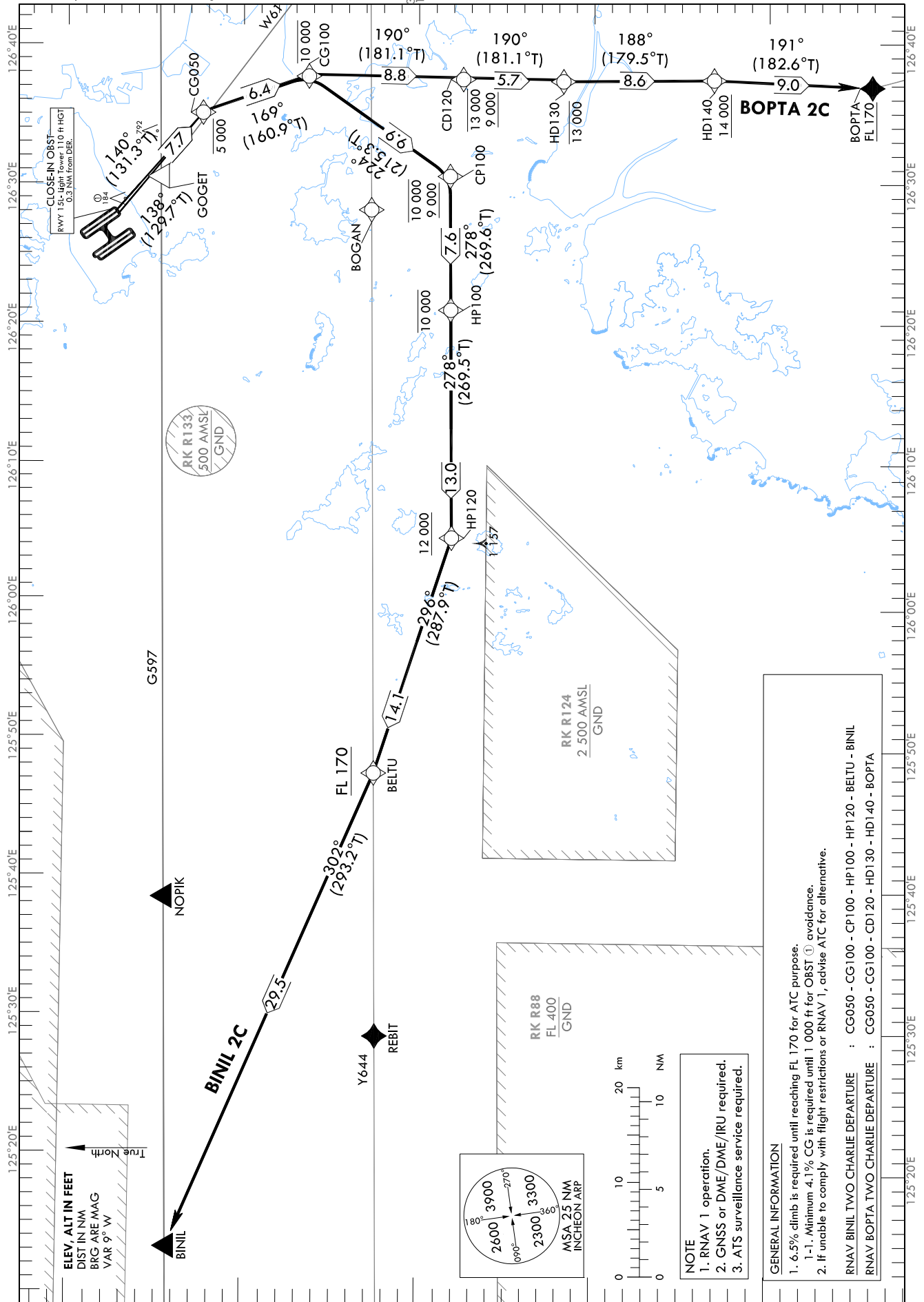
STANDARD DEPARTURE CHART  
INSTRUMENT (SID) - ICAO

TRANSITION ALT 14 000  
TRANSITION LVL FL 140

SEOUL	DEP	125.15	121.4
		124.8	
INCHEON	TWR	118.2	118.8
DAEGU	ACC	132.8	

SEOUL/Incheon Intl(RKSI)  
RWY 15L/R  
RNAV BINIL 2C  
RNAV BOPTA 2C

Note : Departure under ICAO Flight Procedures.



Change : Information of reporting point(BINIL, NOPIK, REBIT, BOPTA).

SEOUL/Incheon Intl(RKSI)

RWY 15L/R

RNAV BINIL 2C, RNAV BOPTA 2C

## AERONAUTICAL DATA TABULATION

## Standard Instrument Departure Procedure Coding Tables

## RNAV BINIL 2C

Serial Number	Path Descriptor	Waypoint Identifier	Fly-over	Course/Track °M(°T)	Distance (NM)	Turn direction	Altitude (ft)	Speed (kt)	Coordinates	VPA/RDH	Navigation specification	Remarks
001	CF	CG050	-	15L-140(131.3) 15R-138(129.7)	7.7	R	-5 000	-	37°22'18.4"N 126°35'07.0"E	-	RNAV 1	-
002	TF	CG100	-	169 (160.9)	6.4	-	-10 000	-	37°16'16.3"N 126°37'43.8"E	-	RNAV 1	-
003	TF	CP100	-	224 (215.3)	9.9	-	-10 000 +9 000	-	37°08'11.8"N 126°30'35.8"E	-	RNAV 1	-
004	TF	HP100	-	278 (269.6)	7.6	-	-10 000	-	37°08'07.8"N 126°21'03.5"E	-	RNAV 1	-
005	TF	HP120	-	278 (269.5)	13.0	-	+12 000	-	37°07'59.2"N 126°04'48.1"E	-	RNAV 1	-
006	TF	BELTU	-	296 (287.9)	14.1	-	+FL 170	-	37°12'18.0"N 125°47'59.0"E	-	RNAV 1	-
007	TF	BINIL	-	302 (293.2)	29.5	-	-	-	37°23'49.2"N 125°13'59.3"E	-	RNAV 1	-

## RNAV BOPTA 2C

Serial Number	Path Descriptor	Waypoint Identifier	Fly-over	Course/Track °M(°T)	Distance (NM)	Turn direction	Altitude (ft)	Speed (kt)	Coordinates	VPA/RDH	Navigation specification	Remarks
001	CF	CG050	-	15L-140(131.3) 15R-138(129.7)	7.7	R	-5 000	-	37°22'18.4"N 126°35'07.0"E	-	RNAV 1	-
002	TF	CG100	-	169 (160.9)	6.4	-	-10 000	-	37°16'16.3"N 126°37'43.8"E	-	RNAV 1	-
003	TF	CD120	-	190 (181.1)	8.8	-	-13 000 +9 000	-	37°07'27.8"N 126°37'31.2"E	-	RNAV 1	-
004	TF	HD130	-	190 (181.1)	5.7	-	-13 000	-	37°01'44.4"N 126°37'23.0"E	-	RNAV 1	-
005	TF	HD140	-	188 (179.5)	8.6	-	+14 000	-	36°53'08.6"N 126°37'29.0"E	-	RNAV 1	-
006	TF	BOPTA	-	191 (182.6)	9.0	-	+FL 170	-	36°44'06.4"N 126°36'58.4"E	-	RNAV 1	-

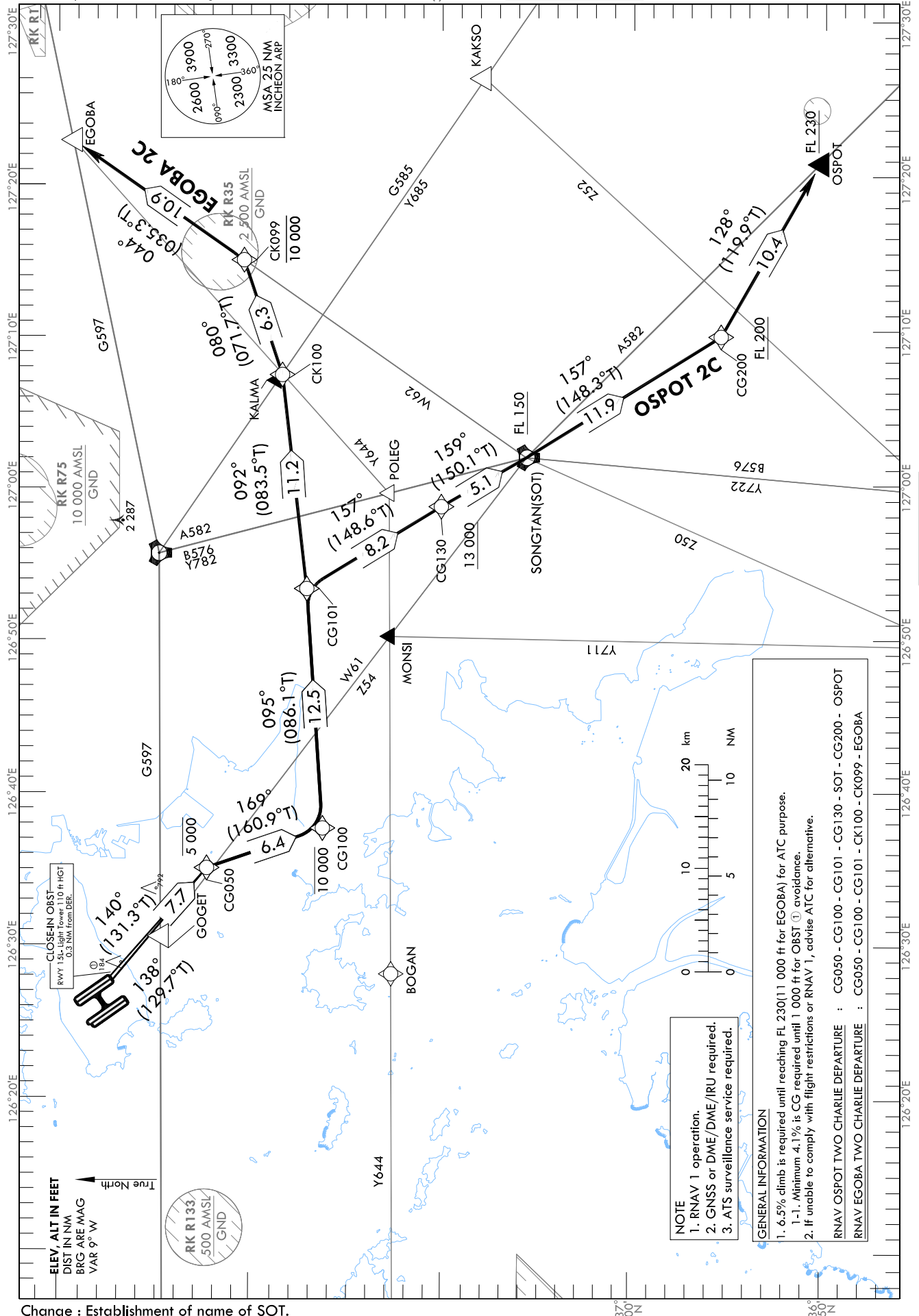
STANDARD DEPARTURE CHART  
INSTRUMENT (SID) - ICAO

TRANSITION ALT 14 000  
TRANSITION LVL FL 140

SEOUL DEP 125.15  
121.4  
124.8  
INCHEON TWR 118.2  
118.8

SEOUL/Incheon Intl(RKSI)  
RWY 15L/R  
RNAV OSPOT 2C  
RNAV EGOBA 2C

Note : Departure under ICAO Flight Procedures.



SEOUL/Incheon Intl(RKSI)  
RWY 15L/R  
RNAV OSPOT 2C, RNAV EGOBA 2C

## AERONAUTICAL DATA TABULATION

Standard Instrument Departure Procedure Coding Tables

RNAV OSPOT 2C										
Serial Number	Path Descriptor	Waypoint Identifier	Fly-over	Course/Track °M(°T)	Distance (NM)	Turn direction	Altitude (ft)	Speed (kt)	Coordinates	VPA/RDH
001	CF	CG050	-	15L-140(131.3) 15R-138(129.7)	7.7	R	-5 000	-	37°22'18.4"N 126°35'07.0"E	-
002	TF	CG100	-	169 (160.9)	6.4	-	-10 000	-	37°16'16.3"N 126°37'43.8"E	-
003	TF	CG101	-	095 (086.1)	12.5	-	-	-	37°17'06.9"N 126°53'22.3"E	-
004	TF	CG130	-	157 (148.6)	8.2	-	+13 000	-	37°10'05.7"N 126°58'43.0"E	-
005	TF	SOT	-	159 (150.1)	5.1	-	+FL 150	-	37°05'39.7"N 127°01'54.0"E	-
006	TF	CG200	-	157 (148.3)	11.9	-	+FL 200	-	36°55'29.2"N 127°09'43.6"E	-
007	TF	OSPOT	-	128 (119.9)	10.4	-	+FL 230	-	36°50'18.1"N 127°20'54.9"E	-
Remarks										
-										
-										
-										
-										
-										
-										
-										
-										

RNAV EGOBA 2C										
Serial Number	Path Descriptor	Waypoint Identifier	Fly-over	Course/Track °M(°T)	Distance (NM)	Turn direction	Altitude (ft)	Speed (kt)	Coordinates	VPA/RDH
001	CF	CG050	-	15L-140(131.3) 15R-138(129.7)	7.7	R	-5 000	-	37°22'18.4"N 126°35'07.0"E	-
002	TF	CG100	-	169 (160.9)	6.4	-	-10 000	-	37°16'16.3"N 126°37'43.8"E	-
003	TF	CG101	-	095 (086.1)	12.5	-	-	-	37°17'06.9"N 126°53'22.3"E	-
004	TF	CK100	-	092 (083.5)	11.2	-	-	-	37°18'22.7"N 127°07'21.4"E	-
005	TF	CK099	-	080 (071.7)	6.3	-	-10 000	-	37°20'21.2"N 127°14'52.0"E	-
006	TF	EGOBA	-	044 (035.3)	10.9	-	-	-	37°29'14.7"N 127°22'45.9"E	-
Remarks										
-										
-										
-										
-										
-										
-										
-										
-										

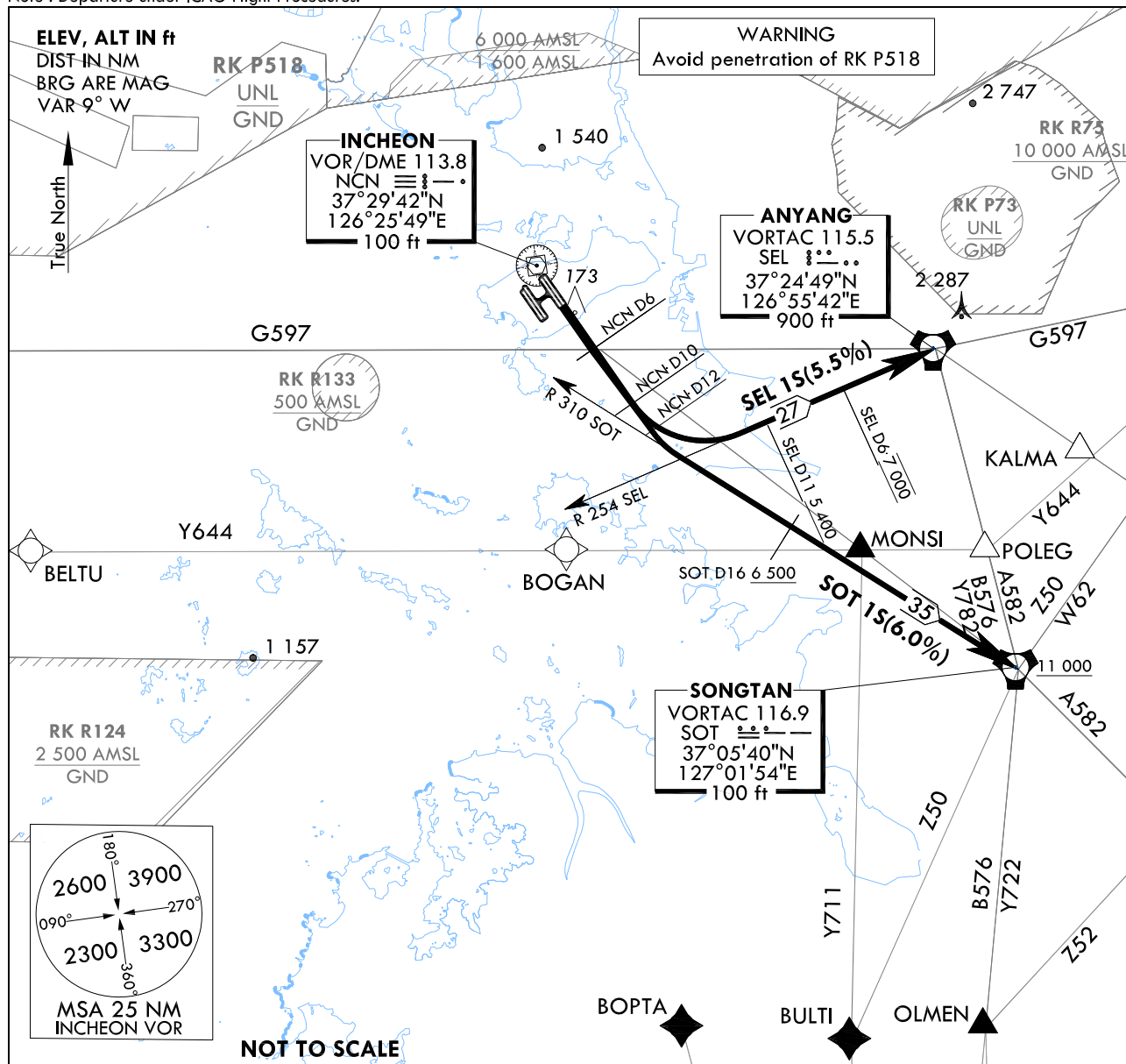
STANDARD DEPARTURE CHART  
INSTRUMENT (SID) - ICAO

TRANSITION ALT 14 000  
TRANSITION LVL FL 140

SEOUL DEP 125.15  
121.4  
124.8  
INCHEON TWR 118.2  
118.8

SEOUL/Incheon Intl(RKSI)  
RWY 15L/R  
SEL 15  
SOT 15

Note : Departure under ICAO Flight Procedures.



GENERAL INFORMATION

- CG in excess of 3.3% necessary and also strict adherence to CG required for airspace, ATC and noise abatement purposes.
  - SEL 15 minimum CG 5.5% to 7 000 ft.
  - SOT 15 minimum CG 6.0% to FL 170.
- If unable to comply with flight restrictions, advise ATC well before departure for alternatives.
- Step climb : Due to interaction with other routes, do NOT climb above 7 000 ft unless cleared by ATC.

SEL(ANYANG) ONE SIERRA DEPARTURE

TAKE OFF RWY 15L : Climb on R 153 NCN , thence...

TAKE OFF RWY 15R : Climb straight ahead, at NCN D6 turn left onto R 153 NCN, thence...

at NCN D10 turn left to intercept R 254 SEL and proceed to SEL, fly by SEL.

Cross SEL D11 at or above 5 400 ft and SEL D6 at 7 000 ft until instructed by ATC.

SOT(SONGTAN) ONE SIERRA DEPARTURE

TAKE OFF RWY 15L : Climb on R 153 NCN, thence...

TAKE OFF RWY 15R : Climb straight ahead, at NCN D6 turn left onto R 153 NCN, thence...

at NCN D12 turn left to intercept R 310 SOT and proceed SOT. At or above 6 500 ft by SOT D16, at or above 11 000 ft by SOT and at or above FL 150 by SOT D8 on A582 or B576. Maintain 7 000 ft until instructed by ATC.

Change : Information of reporting point(MONSI, BOPTA, BULTI, OLMEN, POLEG, KALMA).

**INTENTIONALLY**

**LEFT**

**BLANK**

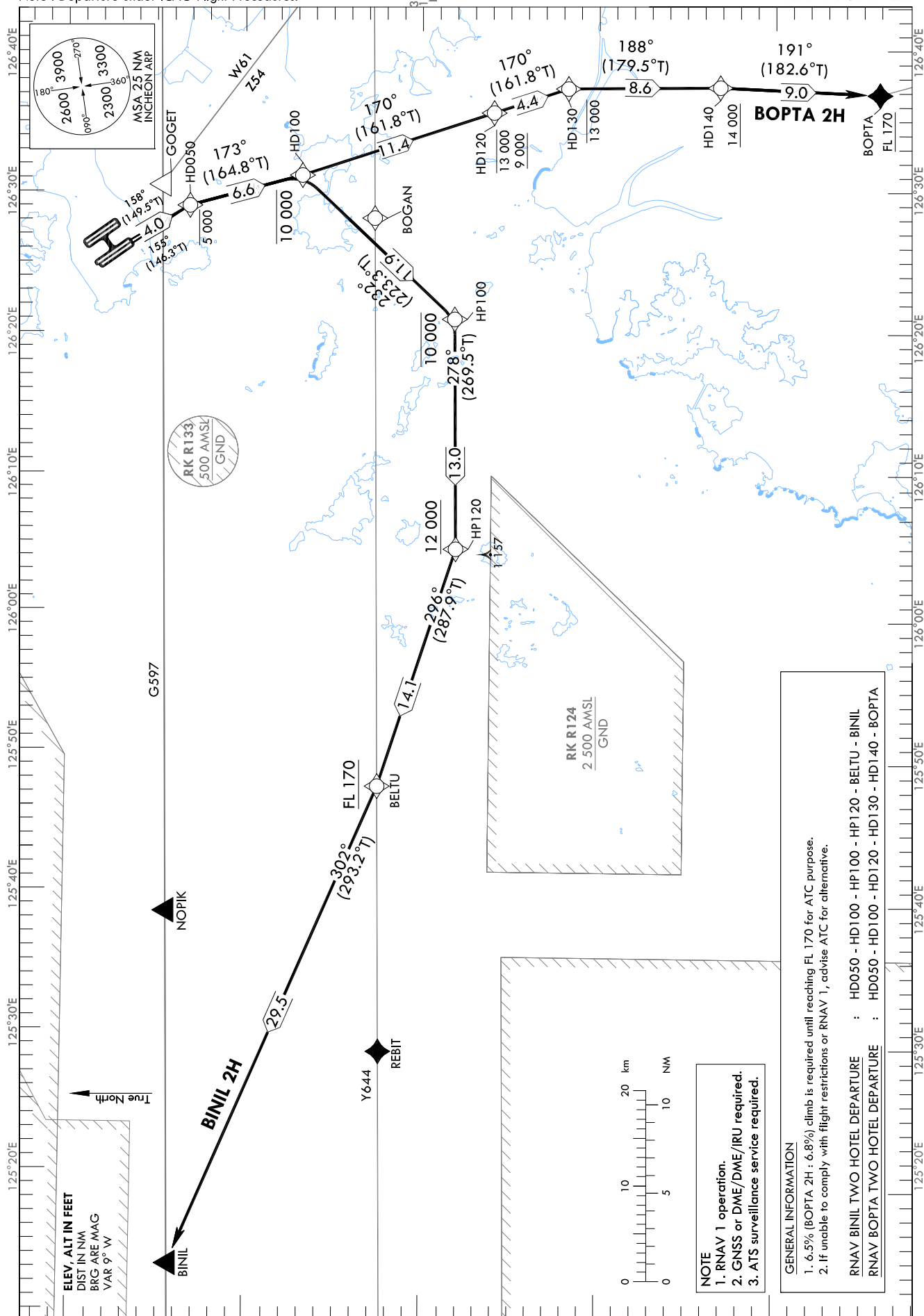
STANDARD DEPARTURE CHART  
INSTRUMENT (SID) - ICAO

TRANSITION ALT 14 000  
TRANSITION LVL FL 140

SEOUL DEP 125.15 121.4  
124.8  
INCHEON TWR 118.2 118.8  
DAEGU ACC 132.8

SEOUL/Incheon Intl(RKSI)  
RWY 16L/R  
RNAV BINIL 2H  
RNAV BOPTA 2H

Note : Departure under ICAO Flight Procedures.



Change : Information of reporting point(BINIL, NOPIK, REBIT, BOPTA).

SEOUL/Incheon Intl(RKSI)

RWY 16L/R

RNAV BINIL 2H, RNAV BOPTA 2H

## AERONAUTICAL DATA TABULATION

## Standard Instrument Departure Procedure Coding Tables

RNAV BINIL 2H										
Serial Number	Path Descriptor	Waypoint Identifier	Fly-over	Course/Track °M(°T)	Distance (NM)	Turn direction	Altitude (ft)	Speed (kt)	Coordinates	VPA/ RDH
001	CF	HD050	-	161-158(149.5) 168-155(146.3)	4.0	R	-5 000	-	37°23'08.6"N 126°29'03.7"E	-
002	TF	HD100	-	173 (164.8)	6.6	-	-10 000	-	37°16'47.0"N 126°31'13.0"E	-
003	TF	HP100	-	232 (223.3)	11.9	-	-10 000	-	37°08'07.8"N 126°21'03.5"E	-
004	TF	HP120	-	278 (269.5)	13.0	-	+12 000	-	37°07'59.2"N 126°04'48.1"E	-
005	TF	BELTU	-	296 (287.9)	14.1	-	+FL 170	-	37°12'18.0"N 125°47'59.0"E	-
006	TF	BINIL	-	302 (293.2)	29.5	-	-	-	37°23'49.2"N 125°13'59.3"E	-

RNAV BOPTA 2H										
Serial Number	Path Descriptor	Waypoint Identifier	Fly-over	Course/Track °M(°T)	Distance (NM)	Turn direction	Altitude (ft)	Speed (kt)	Coordinates	VPA/ RDH
001	CF	HD050	-	161-158(149.5) 168-155(146.3)	4.0	R	-5 000	-	37°23'08.6"N 126°29'03.7"E	-
002	TF	HD100	-	173 (164.8)	6.6	-	-10 000	-	37°16'47.0"N 126°31'13.0"E	-
003	TF	HD120	-	170 (161.8)	11.4	-	-13 000 +9 000	-	37°05'56.6"N 126°35'39.9"E	-
004	TF	HD130	-	170 (161.8)	4.4	-	-13 000	-	37°01'44.4"N 126°37'23.0"E	-
005	TF	HD140	-	188 (179.5)	8.6	-	+14 000	-	36°53'08.6"N 126°37'29.0"E	-
006	TF	BOPTA	-	191 (182.6)	9.0	-	+FL 170	-	36°44'06.4"N 126°36'58.4"E	-



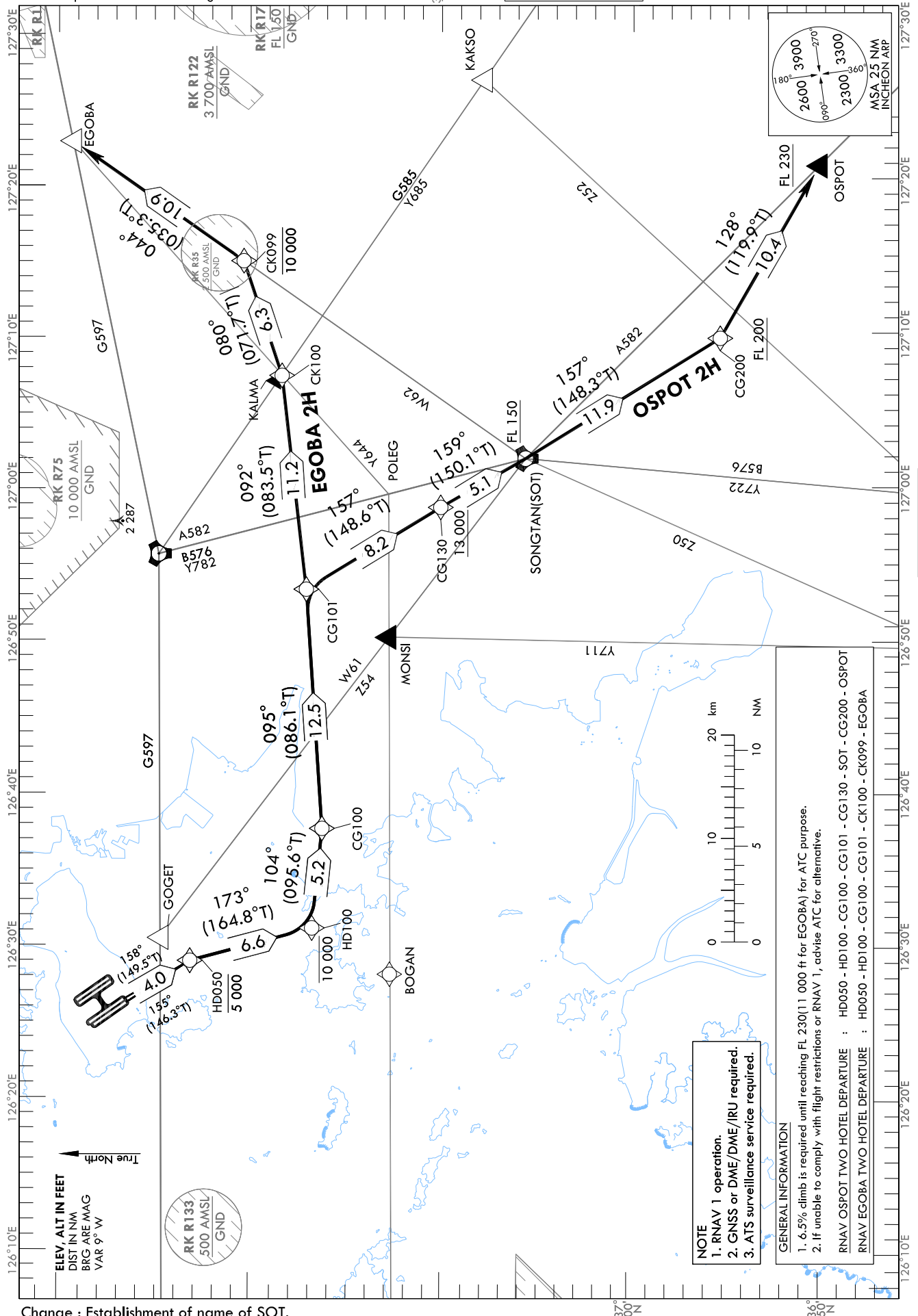
STANDARD DEPARTURE CHART  
INSTRUMENT (SID) - ICAO

TRANSITION ALT 14 000  
TRANSITION LVL FL 140

SEOUL DEP 125.15  
121.4  
124.8  
INCHEON TWR 118.2  
118.8

SEOUL/Incheon Intl(RKSI)  
RWY 16L/R  
RNAV OSPOT 2H  
RNAV EGOBA 2H

Note : Departure under ICAO Flight Procedures.



SEOUL/Incheon Intl(RKSI)  
RWY 16L/R  
RNAV OSPOT 2H, RNAV EGOBA 2H

## AERONAUTICAL DATA TABULATION

## Standard Instrument Departure Procedure Coding Tables

## RNAV OSPOT 2H

Serial Number	Path Descriptor	Waypoint Identifier	Fly-over	Course/Track °M(°T)	Distance (NM)	Turn direction	Altitude (ft)	Speed (kt)	Coordinates	VPA/RDH	Navigation specification	Remarks
001	CF	HD050	-	16L-158(149.5) 16R-155(146.3)	4.0	R	-5 000	-	37°23'08.6"N 126°29'03.7"E	-	RNAV 1	-
002	TF	HD100	-	173 (164.8)	6.6	-	-10 000	-	37°16'47.0"N 126°31'13.0"E	-	RNAV 1	-
003	TF	CG100	-	104 (095.6)	5.2	-	-	-	37°16'16.3"N 126°37'43.8"E	-	RNAV 1	-
004	TF	CG101	-	095 (086.1)	12.5	-	-	-	37°17'06.9"N 126°53'22.3"E	-	RNAV 1	-
005	TF	CG130	-	157 (148.6)	8.2	-	+13 000	-	37°10'05.7"N 126°58'43.0"E	-	RNAV 1	-
006	TF	SOT	-	159 (150.1)	5.1	-	+FL 150	-	37°05'39.7"N 127°01'54.0"E	-	RNAV 1	-
007	TF	CG200	-	157 (148.3)	11.9	-	+FL 200	-	36°55'29.2"N 127°09'43.6"E	-	RNAV 1	-
008	TF	OSPOT	-	128 (119.9)	10.4	-	+FL 230	-	36°50'18.1"N 127°20'54.9"E	-	RNAV 1	-

## RNAV EGOBA 2H

Serial Number	Path Descriptor	Waypoint Identifier	Fly-over	Course/Track °M(°T)	Distance (NM)	Turn direction	Altitude (ft)	Speed (kt)	Coordinates	VPA/RDH	Navigation specification	Remarks
001	CF	HD050	-	16L-158(149.5) 16R-155(146.3)	4.0	R	-5 000	-	37°23'08.6"N 126°29'03.7"E	-	RNAV 1	-
002	TF	HD100	-	173 (164.8)	6.6	-	-10 000	-	37°16'47.0"N 126°31'13.0"E	-	RNAV 1	-
003	TF	CG100	-	104 (095.6)	5.2	-	-	-	37°16'16.3"N 126°37'43.8"E	-	RNAV 1	-
004	TF	CG101	-	095 (086.1)	12.5	-	-	-	37°17'06.9"N 126°53'22.3"E	-	RNAV 1	-
005	TF	CK100	-	092 (083.5)	11.2	-	-	-	37°18'22.7"N 127°07'21.4"E	-	RNAV 1	-
006	TF	CK099	-	080 (071.7)	6.3	-	-10 000	-	37°20'21.2"N 127°14'52.0"E	-	RNAV 1	-
007	TF	EGOBA	-	044 (035.3)	10.9	-	-	-	37°29'14.7"N 127°22'45.9"E	-	RNAV 1	-

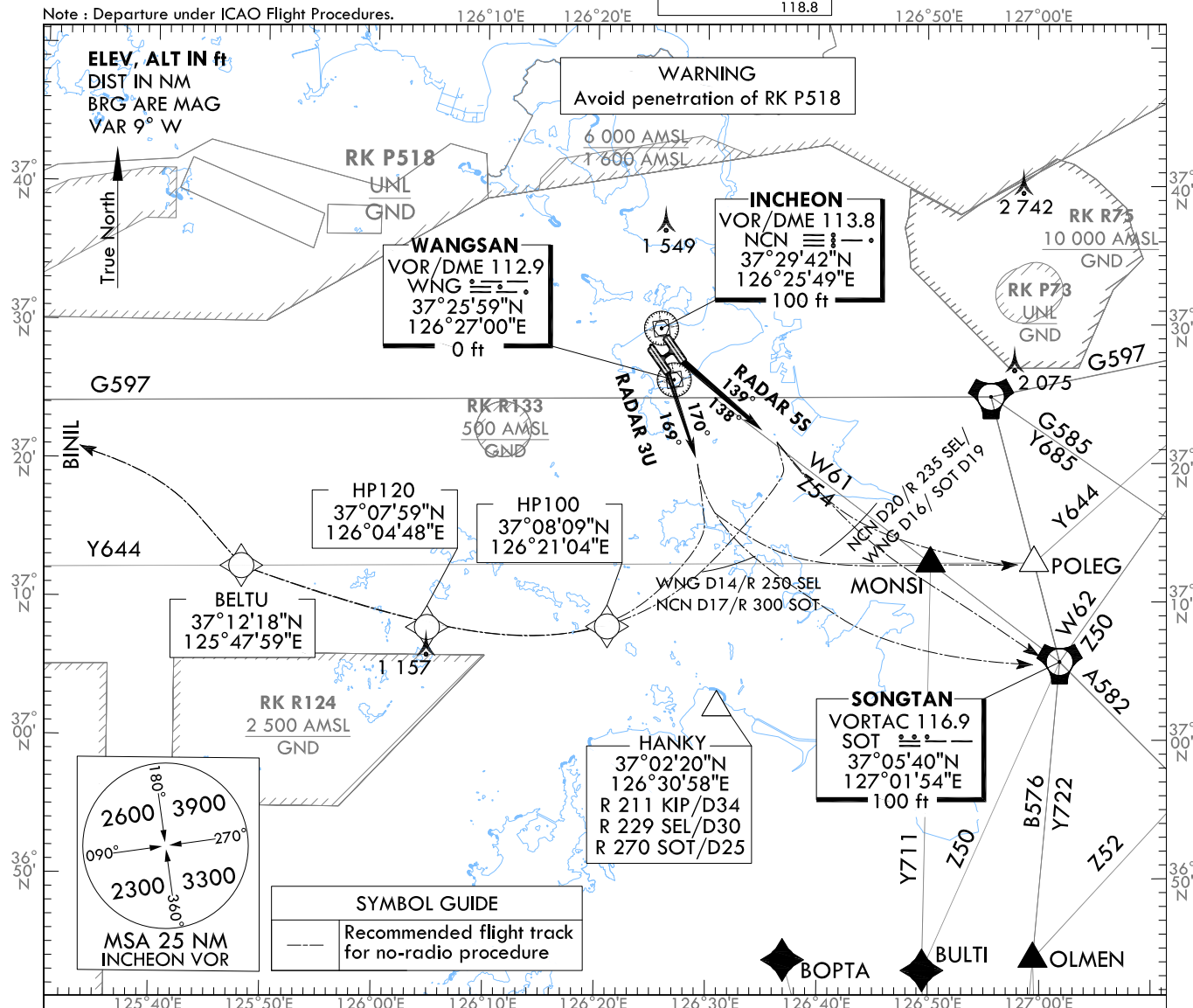
STANDARD DEPARTURE CHART  
INSTRUMENT (SID) - ICAO

TRANSITION ALT 14 000  
TRANSITION LVL FL 140

SEOUL DEP 125.15  
121.4  
124.8  
INCHEON TWR 118.2  
118.8

SEOUL/Incheon Intl(RKSI)  
RWY 15L/R RADAR 5S  
RWY 16L/R RADAR 3U

Note : Departure under ICAO Flight Procedures.



GENERAL INFORMATION

1. 6.0% CG required until FL 150 for ATC and airspace purpose.
2. Pilot shall use caution not to penetrate prohibited or restricted areas around airport.
3. Aircraft may experience delay due to airspace use coordination, traffic volume, and so on.

RADAR FIVE SIERRA DEPARTURE

TAKE OFF RWY 15L : Climb HDG 139°, expect radar vector to airway. Maintain 7 000 ft until instructed by ATC.  
TAKE OFF RWY 15R : Climb HDG 138°, expect radar vector to airway. Maintain 7 000 ft until instructed by ATC.

No radio procedure : If no radio contact with ATC, squawk 7600 , and unless otherwise instructed by ATC, proceed as follows.

- to SOT via R 315 SOT for A582, B576
- to intercept Y644 to POLEG, EGOBA, KARBU for G597
- to intercept R 290 SOT to BINIL or proceed direct to HP100, HP120, BELTU to BINIL for G597 as appropriate.

Pilot shall proceed as described above prior to reaching NCN D20 or R 235 SEL or WNG D16 or SOT D19 due to airspace.

RADAR THREE UNIFORM DEPARTURE

TAKE OFF RWY 16L : Climb HDG 170°, expect radar vector to airway. Maintain 7 000 ft until instructed by ATC.  
TAKE OFF RWY 16R : Climb HDG 169°, expect radar vector to airway. Maintain 7 000 ft until instructed by ATC.

No radio procedure : If no radio contact with ATC, squawk 7600, and unless otherwise instructed by ATC proceed as follows.

- to SOT via R 307 SOT for A582, B576
- to intercept Y644 to POLEG, EGOBA, KARBU for G597
- to intercept R 290 SOT to BINIL or proceed direct to HP100, HP120, BELTU to BINIL for G597 as appropriate.

Pilot shall proceed as described above prior to reaching WNG D14 or R 250 SEL or NCN D17 or R 300 SOT due to airspace.

Change : Information of reporting point(MONSI, BOPTA, BULTI, OLMEN, POLEG).

**INTENTIONALLY**

**LEFT**

**BLANK**

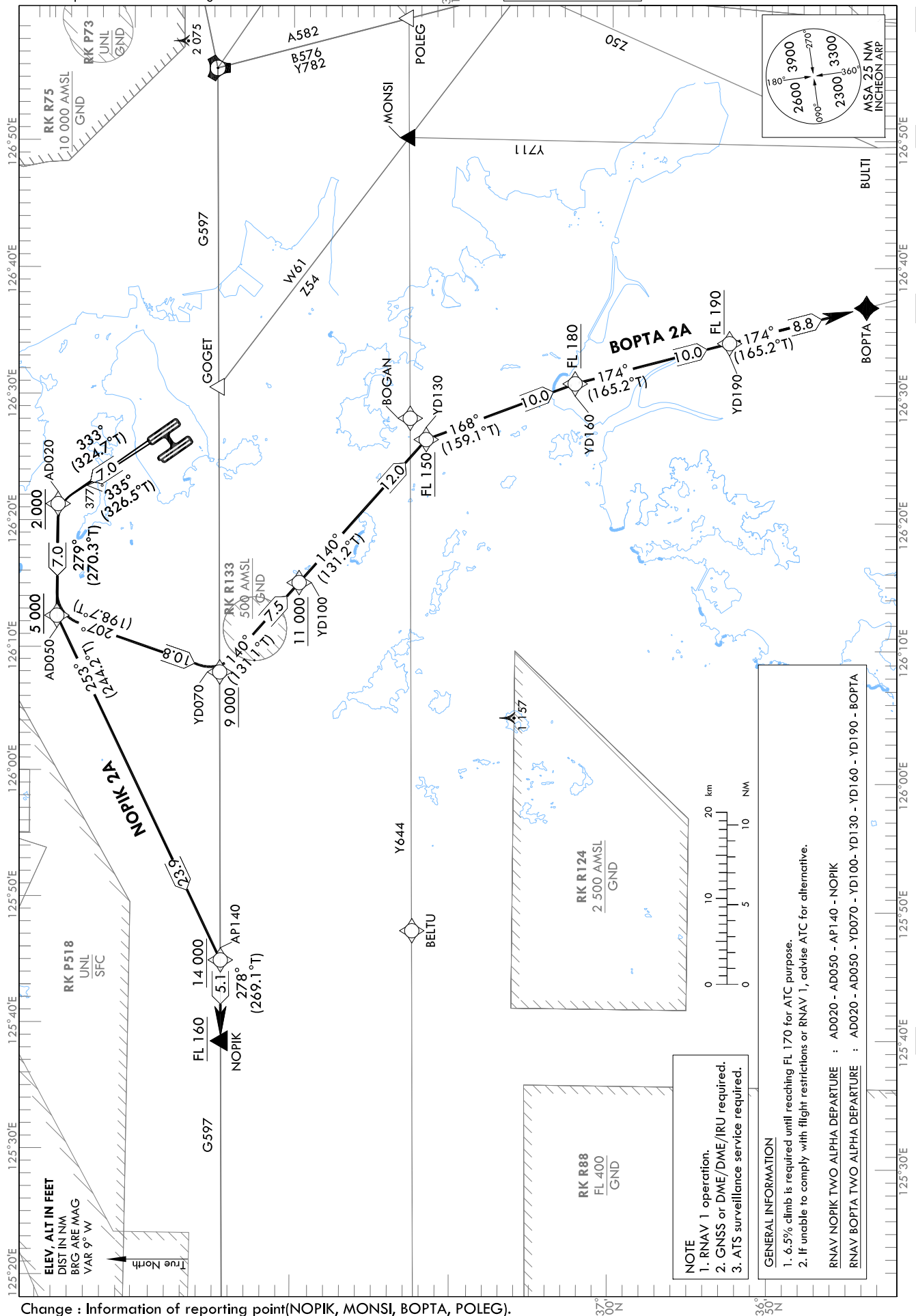
STANDARD DEPARTURE CHART  
INSTRUMENT (SID) - ICAO

TRANSITION ALT 14 000  
TRANSITION LVL FL 140

SEOUL DEP 125.15  
121.4  
124.8  
INCHEON TWR 118.2  
118.8

SEOUL/Incheon Intl(RKSI)  
RWY 33L/R  
RNAV NOPIK 2A  
RNAV BOPTA 2A

Note : Departure under ICAO Flight Procedures.



SEOUL/Incheon Intl(RKSI)  
RWY 33L/R  
RNAV NOPIK 2A, RNAV BOPTA 2A

## AERONAUTICAL DATA TABULATION

## Standard Instrument Departure Procedure Coding Tables

RNAV NOPIK 2A

Serial Number	Path Descriptor	Waypoint Identifier	Fly-over	Course/Track °M(°T)	Distance (NM)	Turn direction	Altitude (ft)	Speed (kt)	Coordinates	VPA/ RDH	Navigation specification	Remarks
001	CF	AD020	-	33L-335(326.5) 33R-333(324.7)	7.0	L	+2 000	-	37°34'45.1"N 126°21'19.0"E	-	RNAV 1	-
002	TF	AD050	-	279 (270.3)	7.0	-	+5 000	-	37°34'46.7"N 126°12'30.6"E	-	RNAV 1	-
003	TF	AP140	-	253 (244.2)	23.9	-	+14 000	-	37°24'16.9"N 125°45'21.4"E	-	RNAV 1	-
004	TF	NOPIK	-	278 (269.1)	5.1	-	+FL 160	-	37°24'12.0"N 125°39'05.0"E	-	RNAV 1	-

RNAV BOPTA 2A

Serial Number	Path Descriptor	Waypoint Identifier	Fly-over	Course/Track °M(°T)	Distance (NM)	Turn direction	Altitude (ft)	Speed (kt)	Coordinates	VPA/ RDH	Navigation specification	Remarks
001	CF	AD020	-	33L-335(326.5) 33R-333(324.7)	7.0	L	+2 000	-	37°34'45.1"N 126°21'19.0"E	-	RNAV 1	-
002	TF	AD050	-	279 (270.3)	7.0	-	+5 000	-	37°34'46.7"N 126°12'30.6"E	-	RNAV 1	-
003	TF	YD070	-	207 (198.7)	10.8	-	+9 000	-	37°24'31.4"N 126°08'09.0"E	-	RNAV 1	-
004	TF	YD100	-	140 (131.1)	7.5	-	+11 000	-	37°19'35.0"N 126°15'14.0"E	-	RNAV 1	-
005	TF	YD130	-	140 (131.2)	12.0	-	+FL 150	-	37°11'39.7"N 126°26'32.1"E	-	RNAV 1	-
006	TF	YD160	-	168 (159.1)	10.0	-	+FL 180	-	37°02'19.6"N 126°30'58.2"E	-	RNAV 1	-
007	TF	YD190	-	174 (165.2)	10.0	-	+FL 190	-	36°52'38.3"N 126°34'10.0"E	-	RNAV 1	-
008	TF	BOPTA	-	174 (165.2)	8.8	-	-	-	36°44'06.4"N 126°36'58.4"E	-	RNAV 1	-

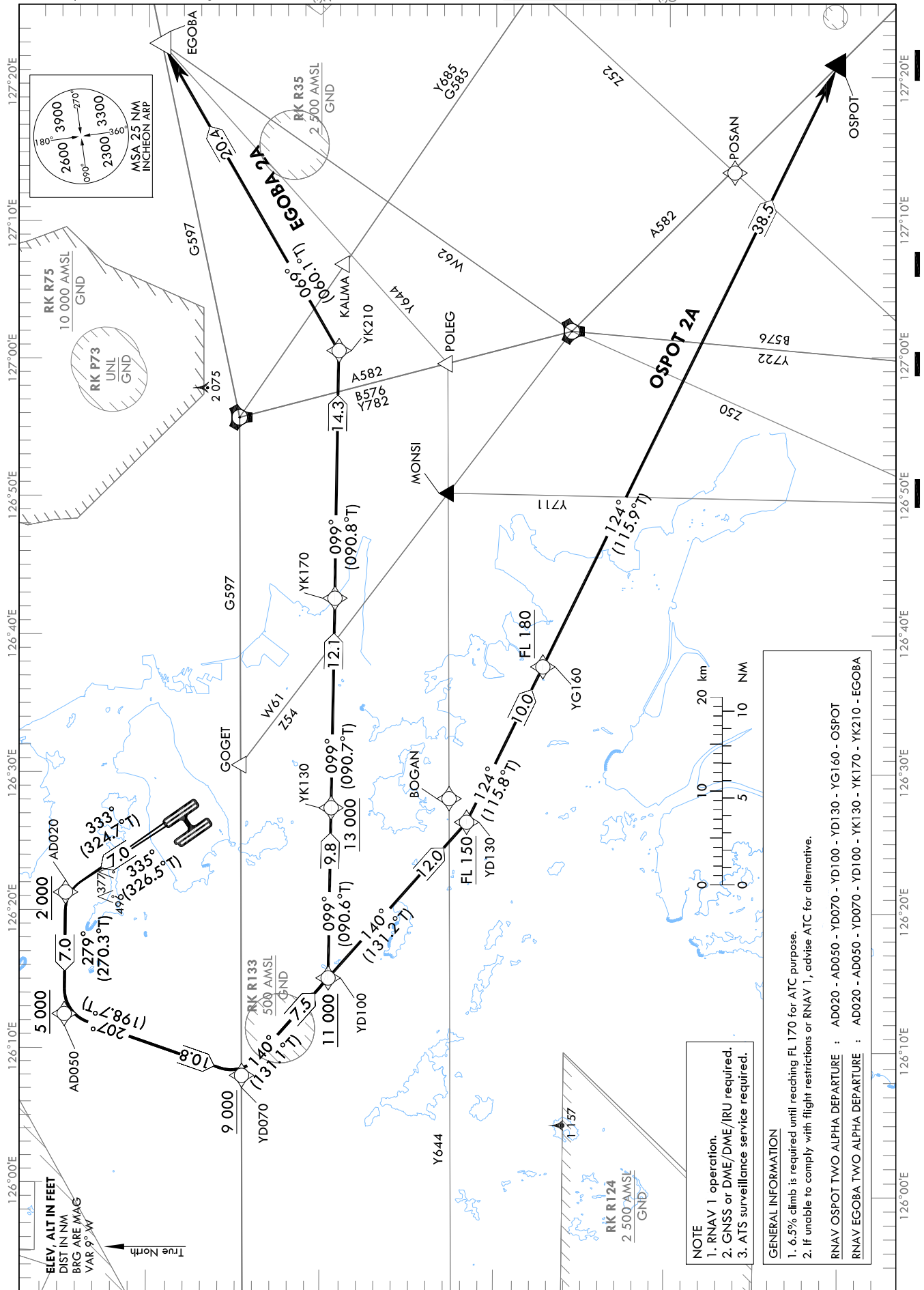
STANDARD DEPARTURE CHART  
INSTRUMENT (SID) - ICAO

TRANSITION ALT 14 000  
TRANSITION LVL FL 140

SEOUL DEP	125.15
	121.4
	124.8
INCHEON TWR	118.2
	118.8

SEOUL/Incheon Intl(RKSI)  
RWY 33L/R  
RNAV OSPOT 2A  
RNAV EGOBA 2A

Note : Departure under ICAO Flight Procedures.



## AERONAUTICAL DATA TABULATION

## Standard Instrument Departure Procedure Coding Tables

## RNAV OSPOT 2A

Serial Number	Path Descriptor	Waypoint Identifier	Fly-over	Course/Track °M(°T)	Distance (NM)	Turn direction	Altitude (ft)	Speed (kt)	Coordinates	VPA/RDH	Navigation specification	Remarks
001	CF	AD020	-	33L-335(326.5) 33R-333(324.7)	7.0	L	+2 000	-	37°34'45.1"N 126°21'19.0"E	-	RNAV 1	-
002	TF	AD050	-	279 (270.3)	7.0	-	+5 000	-	37°34'46.7"N 126°12'30.6"E	-	RNAV 1	-
003	TF	YD070	-	207 (198.7)	10.8	-	+9 000	-	37°24'31.4"N 126°08'09.0"E	-	RNAV 1	-
004	TF	YD100	-	140 (131.1)	7.5	-	+11 000	-	37°19'35.0"N 126°15'14.0"E	-	RNAV 1	-
005	TF	YD130	-	140 (131.2)	12.0	-	+FL 150	-	37°11'39.7"N 126°26'32.1"E	-	RNAV 1	-
006	TF	YG160	-	124 (115.8)	10.0	-	+FL 180	-	37°07'18.5"N 126°37'44.9"E	-	RNAV 1	-
007	TF	OSPOT	-	124 (115.9)	38.5	-	-	-	36°50'18.1"N 127°20'54.9"E	-	RNAV 1	-

## RNAV EGOBA 2A

Serial Number	Path Descriptor	Waypoint Identifier	Fly-over	Course/Track °M(°T)	Distance (NM)	Turn direction	Altitude (ft)	Speed (kt)	Coordinates	VPA/RDH	Navigation specification	Remarks
001	CF	AD020	-	33L-335(326.5) 33R-333(324.7)	7.0	L	+2 000	-	37°34'45.1"N 126°21'19.0"E	-	RNAV 1	-
002	TF	AD050	-	279 (270.3)	7.0	-	+5 000	-	37°34'46.7"N 126°12'30.6"E	-	RNAV 1	-
003	TF	YD070	-	207 (198.7)	10.8	-	+9 000	-	37°24'31.4"N 126°08'09.0"E	-	RNAV 1	-
004	TF	YD100	-	140 (131.1)	7.5	-	+11 000	-	37°19'35.0"N 126°15'14.0"E	-	RNAV 1	-
005	TF	YK130	-	099 (090.6)	9.8	-	+13 000	-	37°19'28.6"N 126°27'31.1"E	-	RNAV 1	-
006	TF	YK170	-	099 (090.7)	12.1	-	-	-	37°19'18.2"N 126°42'38.8"E	-	RNAV 1	-
007	TF	YK210	-	099 (090.8)	14.3	-	-	-	37°19'05.3"N 127°00'31.4"E	-	RNAV 1	-
008	TF	EGOBA	-	069 (060.1)	20.4	-	-	-	37°29'14.7"N 127°22'45.9"E	-	RNAV 1	-



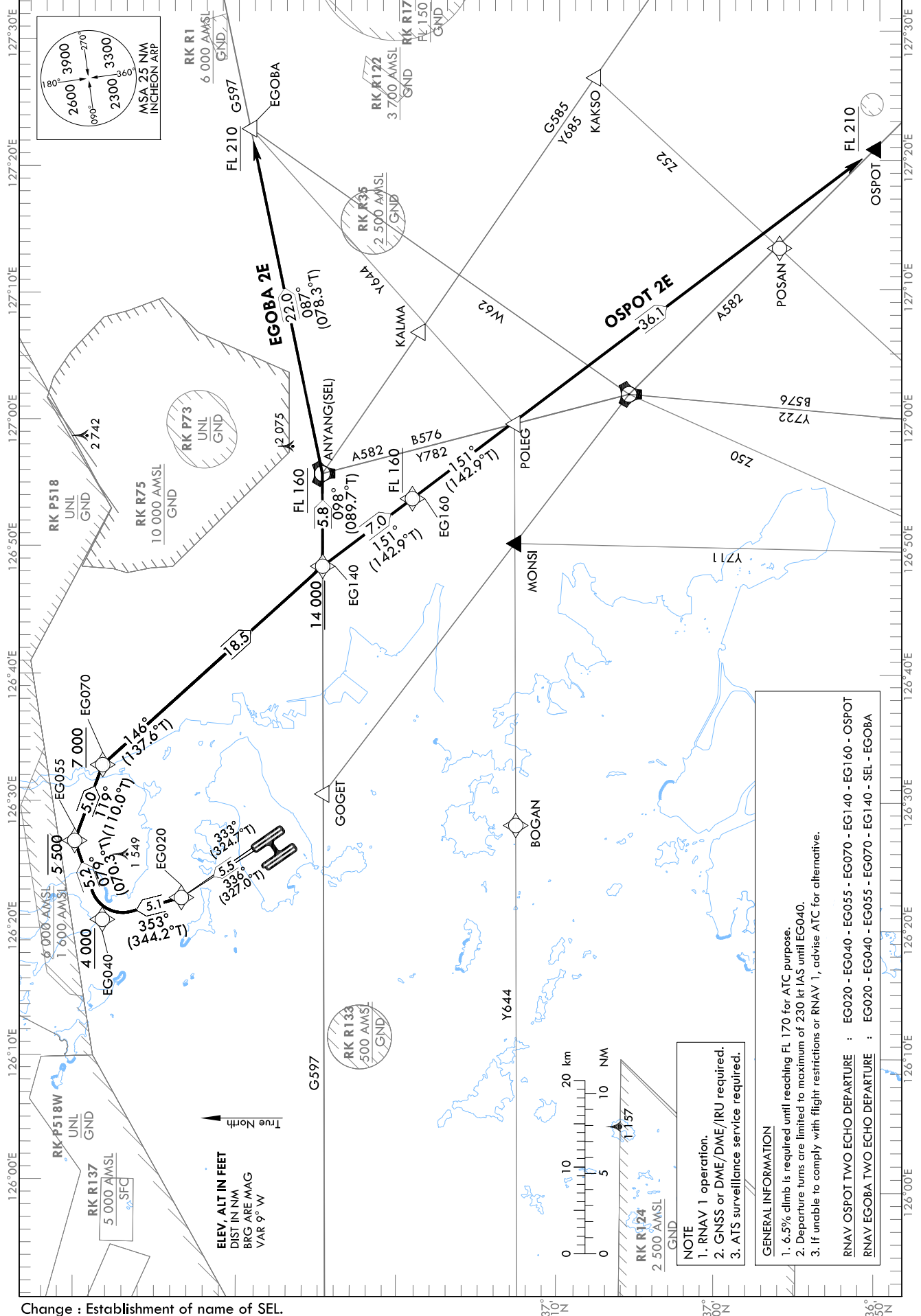
STANDARD DEPARTURE CHART  
INSTRUMENT (SID) - ICAO

TRANSITION ALT 14 000  
TRANSITION LVL FL 140

SEOUL DEP 125.15  
121.4  
124.8  
INCHEON TWR 118.2  
118.8

SEOUL/Incheon Intl(RKSI)  
RWY 33L/R  
RNAV OSPOT 2E  
RNAV EGOBA 2E

Note : Departure under ICAO Flight Procedures.



## AERONAUTICAL DATA TABULATION

## Standard Instrument Departure Procedure Coding Tables

## RNAV OSPOT 2E

Serial Number	Path Descriptor	Waypoint Identifier	Fly-over	Course/Track °M(°T)	Distance (NM)	Turn direction	Altitude (ft)	Speed (kt)	Coordinates	VPA/RDH	Navigation specification	Remarks
001	CF	EG020	-	33L-336(327.0) 33R-333(324.7)	5.5	R	-	-230	37°33'31.6"N 126°22'24.5"E	-	RNAV 1	-
002	TF	EG040	-	353 (344.2)	5.1	-	+4 000	-230	37°38'27.4"N 126°20'39.1"E	-	RNAV 1	-
003	TF	EG055	-	079 (070.3)	5.2	-	-5 500	-	37°40'12.7"N 126°26'50.5"E	-	RNAV 1	-
004	TF	EG070	-	119 (110.0)	5.0	-	+7 000	-	37°38'29.2"N 126°32'48.6"E	-	RNAV 1	-
005	TF	EG140	-	146 (137.6)	18.5	-	+14 000	-	37°24'47.5"N 126°48'26.5"E	-	RNAV 1	-
006	TF	EG160	-	151 (142.9)	7.0	-	+FL 160	-	37°19'11.6"N 126°53'44.6"E	-	RNAV 1	-
007	TF	OSPOT	-	151 (142.9)	36.1	-	+FL 210	-	36°50'18.1"N 127°20'54.9"E	-	RNAV 1	-

## RNAV EGOBA 2E

Serial Number	Path Descriptor	Waypoint Identifier	Fly-over	Course/Track °M(°T)	Distance (NM)	Turn direction	Altitude (ft)	Speed (kt)	Coordinates	VPA/RDH	Navigation specification	Remarks
001	CF	EG020	-	33L-336(327.0) 33R-333(324.7)	5.5	R	-	-230	37°33'31.6"N 126°22'24.5"E	-	RNAV 1	-
002	TF	EG040	-	353 (344.2)	5.1	-	+4 000	-230	37°38'27.4"N 126°20'39.1"E	-	RNAV 1	-
003	TF	EG055	-	079 (070.3)	5.2	-	-5 500	-	37°40'12.7"N 126°26'50.5"E	-	RNAV 1	-
004	TF	EG070	-	119 (110.0)	5.0	-	+7 000	-	37°38'29.2"N 126°32'48.6"E	-	RNAV 1	-
005	TF	EG140	-	146 (137.6)	18.5	-	+14 000	-	37°24'47.5"N 126°48'26.5"E	-	RNAV 1	-
006	TF	SEL	-	098 (089.7)	5.8	-	+FL 160	-	37°24'49.0"N 126°55'42.1"E	-	RNAV 1	-
007	TF	EGOBA	-	087 (078.3)	22.0	-	+FL 210	-	37°29'14.7"N 127°22'45.9"E	-	RNAV 1	-

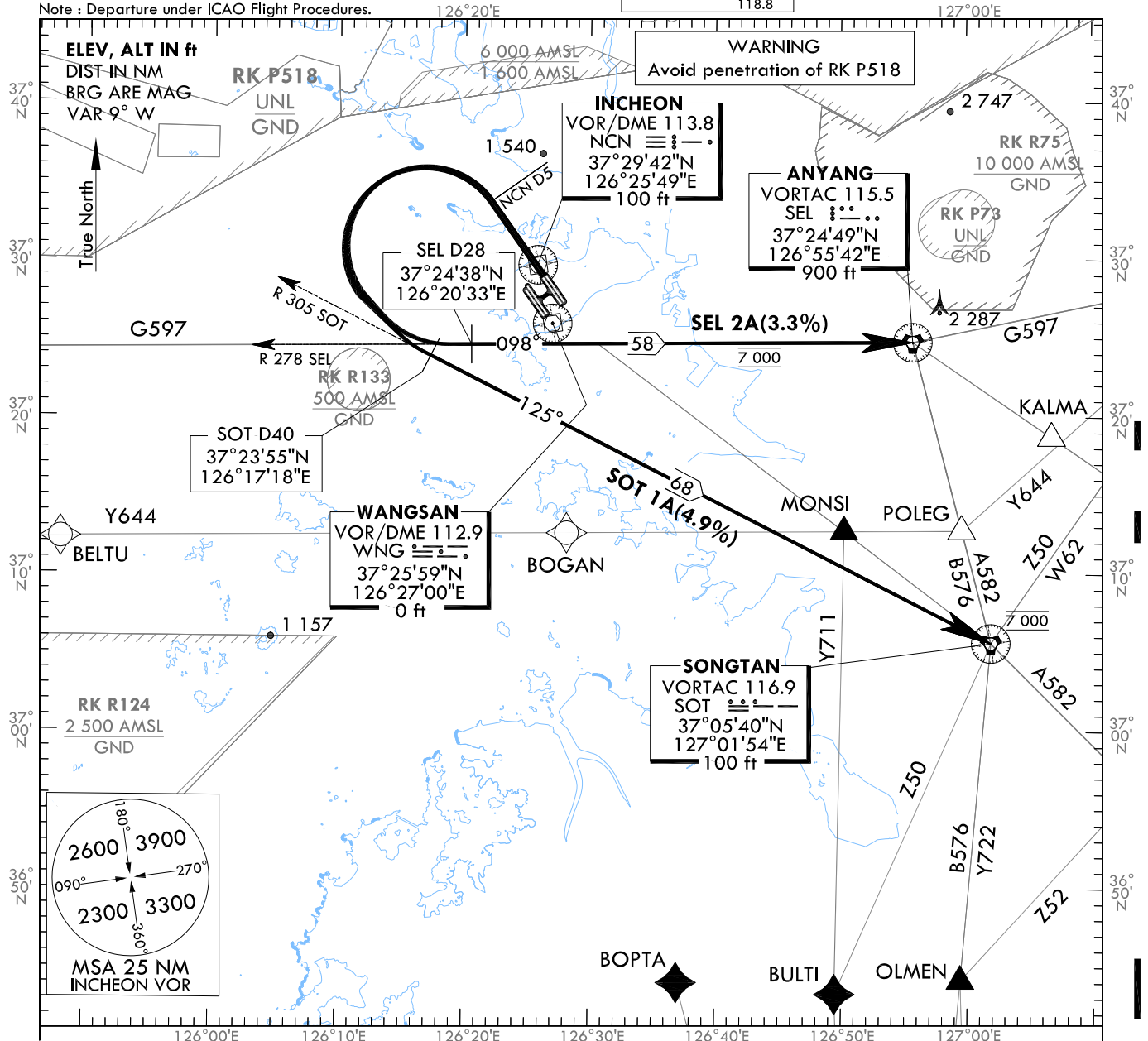
STANDARD DEPARTURE CHART  
INSTRUMENT (SID) - ICAO

TRANSITION ALT 14 000  
TRANSITION LVL FL 140

SEOUL DEP 125.15  
121.4  
124.8  
INCHEON TWR 118.2  
118.8

SEOUL/Incheon Intl(RKSI)  
RWY 33L/R  
SEL 2A, SOT 1A

Note : Departure under ICAO Flight Procedures.



**GENERAL INFORMATION**

- CG in excess of 3.3% necessary for Airspace and ATC purposes.
  - 1.1 SOT 1A minimum CG 4.9% to FL 170.
- After NCN D5, 15 degree bank angle recommended during turn for noise abatement and pilot should use caution not to penetrate prohibited area. (RK P518)
- If unable to comply with flight restrictions, advise ATC well before departure for alternatives.
- Step climb : Due to interaction with other routes, do NOT climb above 7 000 ft unless cleared by ATC.
- Pilot shall use caution not to make early or lead turn prior to reaching NCN D5.

**SEL(ANYANG) TWO ALPHA DEPARTURE**

TAKE OFF RWY 33L/R : Climb straight ahead, at NCN D5 turn left to intercept R 278 SEL and cross.  
R 278 SEL/D28 then proceed to SEL. Maintain 7 000 ft until instructed by ATC.

**SOT(SONGTAN) ONE ALPHA DEPARTURE**

TAKE OFF RWY 33L/R : Climb straight ahead, at NCN D5 turn left to intercept R 305 SOT and cross  
R 305 SOT/D40 then proceed to SOT. Maintain 7 000 ft until instructed by ATC.

Change : Information of reporting point(MONSI, BOPTA, BULTI, OLMEN, POLEG, KALMA).

**INTENTIONALLY**

**LEFT**

**BLANK**

**SEOUL/Incheon Intl(RKSI)**  
**RWY 34L/R**  
**RNAV NOPIK 2Y**  
**RNAV BOPTA 2Y**

AIP AMDT 12/24

SEOUL/Incheon Intl(RKSI)  
RWY 34L/R  
RNAV NOPIK 2Y, RNAV BOPTA 2Y

## AERONAUTICAL DATA TABULATION

## Standard Instrument Departure Procedure Coding Tables

RNAV NOPIK 2Y												
Serial Number	Path Descriptor	Waypoint Identifier	Fly-over	Course/Track °M(°T)	Distance (NM)	Turn direction	Altitude (ft)	Speed (kt)	Coordinates	VPA/ RDH	Navigation specification	Remarks
001	CF	YD020	-	34L-323(314.5) 34R-318(309.7)	34L-3.0 34R-2.9	L	-	-230	37°30'13.3"N 126°22'07.7"E	-	RNAV 1	Bank angle 20°
002	TF	YD040	-	280 (271.8)	8.9	-	+4 000	-	37°30'29.6"N 126°10'56.9"E	-	RNAV 1	-
003	TF	YP080	-	245 (236.7)	11.0	-	+8 000	-	37°24'26.5"N 125°59'24.4"E	-	RNAV 1	-
004	TF	NOPIK	-	278 (269.2)	16.2	-	+13 000	-	37°24'12.0"N 125°39'05.0"E	-	RNAV 1	-

RNAV BOPTA 2Y												
Serial Number	Path Descriptor	Waypoint Identifier	Fly-over	Course/Track °M(°T)	Distance (NM)	Turn direction	Altitude (ft)	Speed (kt)	Coordinates	VPA/ RDH	Navigation specification	Remarks
001	CF	YD020	-	34L-323(314.5) 34R-318(309.7)	34L-3.0 34R-2.9	L	-	-230	37°30'13.3"N 126°22'07.7"E	-	RNAV 1	Bank angle 20°
002	TF	YD040	-	280 (271.8)	8.9	-	+4 000	-	37°30'29.6"N 126°10'56.9"E	-	RNAV 1	-
003	TF	YD070	-	209 (200.5)	6.4	-	+7 000	-	37°24'31.4"N 126°08'09.0"E	-	RNAV 1	-
004	TF	YD100	-	140 (131.1)	7.5	-	+10 000	-	37°19'35.0"N 126°15'14.0"E	-	RNAV 1	-
005	TF	YD130	-	140 (131.2)	12.0	-	+13 000	-	37°11'39.7"N 126°26'32.1"E	-	RNAV 1	-
006	TF	YD160	-	168 (159.1)	10.0	-	+FL 160	-	37°02'19.6"N 126°30'58.2"E	-	RNAV 1	-
007	TF	YD190	-	174 (165.2)	10.0	-	+FL 190	-	36°52'38.3"N 126°34'10.0"E	-	RNAV 1	-
008	TF	BOPTA	-	174 (165.2)	8.8	-	-	-	36°44'06.4"N 126°36'58.4"E	-	RNAV	-

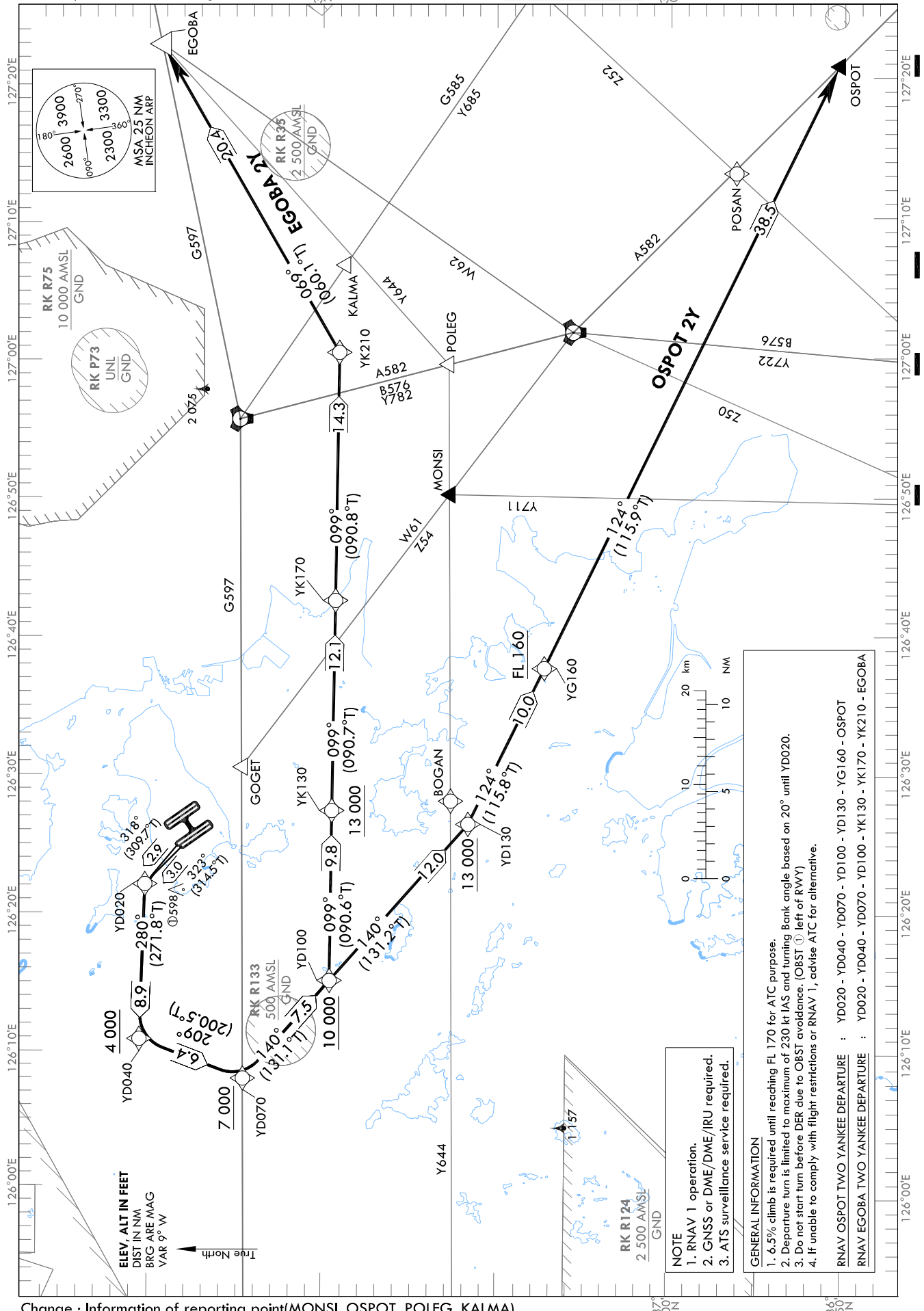
STANDARD DEPARTURE CHART  
INSTRUMENT (SID) - ICAO

TRANSITION ALT 14 000  
TRANSITION LVL FL 140

SEOUL DEP 125.15  
121.4  
124.8  
INCHEON TWR 118.2  
118.8

SEOUL/Incheon Intl(RKSI)  
RWY 34L/R  
RNAV OSPOT 2Y  
RNAV EGOBA 2Y

Note : Departure under ICAO Flight Procedures.



Change : Information of reporting point(MONSI, OSPOT, POLEG, KALMA).

## AERONAUTICAL DATA TABULATION

## Standard Instrument Departure Procedure Coding Tables

## RNAV OSPOT 2Y

Serial Number	Path Descriptor	Waypoint Identifier	Fly-over	Course/Track °M(°T)	Distance (NM)	Turn direction	Altitude (ft)	Speed (kt)	Coordinates	VPA/RDH	Navigation specification	Remarks
001	CF	YD020	-	34L-323(314.5) 34R-318(309.7)	34L-3.0 34R-2.9	L	-	-230	37°30'13.3"N 126°22'07.7"E	-	RNAV 1	Bank angle 20°
002	TF	YD040	-	280 (271.8)	8.9	-	+4 000	-	37°30'29.6"N 126°10'56.9"E	-	RNAV 1	-
003	TF	YD070	-	209 (200.5)	6.4	-	+7 000	-	37°24'31.4"N 126°08'09.0"E	-	RNAV 1	-
004	TF	YD100	-	140 (131.1)	7.5	-	+10 000	-	37°19'35.0"N 126°15'14.0"E	-	RNAV 1	-
005	TF	YD130	-	140 (131.2)	12.0	-	+13 000	-	37°11'39.7"N 126°26'32.1"E	-	RNAV 1	-
006	TF	YG160	-	124 (115.8)	10.0	-	+FL 160	-	37°07'18.5"N 126°37'44.9"E	-	RNAV 1	-
007	TF	OSPOT	-	124 (115.9)	38.5	-	-	-	36°50'18.1"N 127°20'54.9"E	-	RNAV 1	-

## RNAV EGOBA 2Y

Serial Number	Path Descriptor	Waypoint Identifier	Fly-over	Course/Track °M(°T)	Distance (NM)	Turn direction	Altitude (ft)	Speed (kt)	Coordinates	VPA/RDH	Navigation specification	Remarks
001	CF	YD020	-	34L-323(314.5) 34R-318(309.7)	34L-3.0 34R-2.9	L	-	-230	37°30'13.3"N 126°22'07.7"E	-	RNAV 1	Bank angle 20°
002	TF	YD040	-	280 (271.8)	8.9	-	+4 000	-	37°30'29.6"N 126°10'56.9"E	-	RNAV 1	-
003	TF	YD070	-	209 (200.5)	6.4	-	+7 000	-	37°24'31.4"N 126°08'09.0"E	-	RNAV 1	-
004	TF	YD100	-	140 (131.1)	7.5	-	+10 000	-	37°19'35.0"N 126°15'14.0"E	-	RNAV 1	-
005	TF	YK130	-	099 (090.6)	9.8	-	+13 000	-	37°19'28.6"N 126°27'31.1"E	-	RNAV 1	-
006	TF	YK170	-	099 (090.7)	12.1	-	-	-	37°19'18.2"N 126°42'38.8"E	-	RNAV 1	-
007	TF	YK210	-	099 (090.8)	14.3	-	-	-	37°19'05.3"N 127°00'31.4"E	-	RNAV 1	-
008	TF	EGOBA	-	069 (060.1)	20.4	-	-	-	37°29'14.7"N 127°22'45.9"E	-	RNAV 1	-



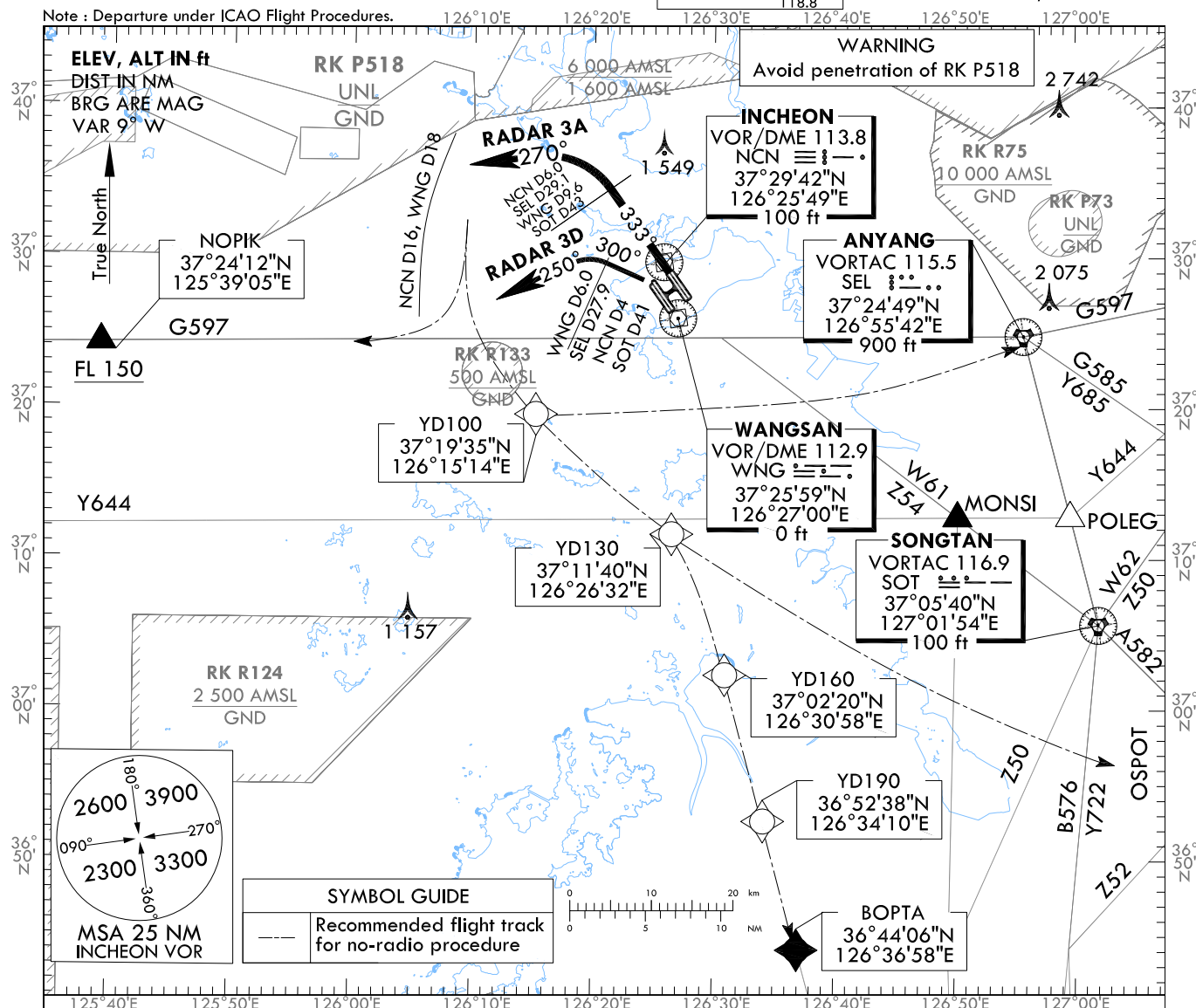
STANDARD DEPARTURE CHART  
INSTRUMENT (SID) - ICAO

TRANSITION ALT 14 000  
TRANSITION LVL FL 140

SEOUL DEP 125.15  
121.4  
124.8  
INCHEON TWR 118.2  
118.8

SEOUL/Incheon Intl(RKSI)  
RWY 33L/R RADAR 3A  
RWY 34L/R RADAR 3D

Note : Departure under ICAO Flight Procedures.



**GENERAL INFORMATION**

1. 6.0% CG required until FL 150 for ATC and airspace purpose.
2. Pilot shall use caution not to penetrate prohibited or restricted areas around airport.
3. Aircraft may experience delay due to airspace use coordination, traffic volume, and so on.

**RADAR THREE ALPHA DEPARTURE**

TAKE OFF RWY 33L/R : Climb on RWY HDG until NCN D6.0(SEL D29.1 or WNG D9.6 or SOT D43),  
turn left HDG 270° expect radar vector to airway.

No radio procedure : If no radio contact with ATC, squawk 7600, and unless otherwise instructed by ATC proceed as follows.

- fly south to join R 269 SEL to SEL or proceed direct to YD100 then SEL for G597
- fly south to join G597 to NOPIK
- fly south to YD100, YD130 and OSPOT for A582
- fly south to YD100, YD130, YD160, YD190 and BOPTA for BEDES via Z51.

Pilot shall remain within NCN D16 (SEL D40 or 17 NM from Airport as appropriate) during on HDG 270°.

**RADAR THREE DELTA DEPARTURE**

TAKE OFF RWY 34L/R : Climb HDG 300° until WNG D6.0(SEL D27.9 or NCN D4 or SOT D41),  
turn left HDG 250° expect radar vector to airway. Maintain 3 000 ft until instructed by ATC.

No radio procedure : If no radio contact with ATC, squawk 7600, and unless otherwise instructed by ATC proceed as follows.

- fly south to join R 269 SEL to SEL or proceed direct to YD100 then SEL for G597
- fly south to join G597 to NOPIK
- fly south to YD100, YD130 and OSPOT for A582
- fly south to YD100, YD130, YD160, YD190 and BOPTA for BEDES via Z51.

Pilot shall remain within NCN D16 (SEL D40 or 17 NM from Airport as appropriate) during on HDG 250°.

Change : Information of reporting point(NOPIK, MONSI, BOPTA, POLEG).

INTENTIONALLY

LEFT

BLANK